

Hot Sheet

Home > Hot Sheet



Search StarMagazine.com

Go

What's Hot | Entertainment | Fashion | Beauty | Hot Spots | Food & Drink | Gadgets | Star Shopper



HOT KEYCHAIN

Add some glam to your [key ring](#) with the Breast Cancer Awareness Keychain by Hard Rock. This chic accessory features six crystal-encrusted [charms](#) painted in vibrant shades of pink. Fifteen percent

of the key chain's retail price will be donated to The Breast Cancer Research Foundation, an organization dedicated to funding clinical and genetic research. \$20, [hardrock.com](#)



HOT SHADES

Paris Hilton looks fashion-forward in her Dharma [sunglasses](#) by VonZipper. Available in a variety of colors, these \$95 oversized shades are made with scratch-resistant lenses. Justin Timberlake and Kanye West are also fans of the line's shades, which offer

100 percent UVA/UVB protection. [vonzipper.com](#)



HOT CUFF

Look fashionable while helping a good cause! Michelle Trachtenberg and Emmy Rossum are wearing Love for Life [bracelets](#) from Aldo, a limited-edition cuff (\$5) etched with artwork by children living in Rwanda. Michelle's gold-colored bracelet also

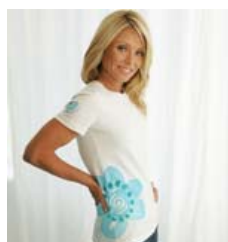
comes in silver tone and a rubber version for men. All proceeds go to the YouthAIDS charity. [aldoshoes.com](#)



HOT SHIRT

Gwyneth Paltrow has been named the Entertainment Industry Foundation ambassador for Saks Fifth Avenue's 2008 Key to the Cure campaign and models the drive's limited-edition T-shirt, created by Karl Lagerfeld. This cotton tee features the

designer's artwork on the front and an illustration of himself on the back. More than \$35 of the \$40 tee will go to the EIF's Women's Cancer Research Fund. [saks.com](#)



HOT TEE

To raise awareness and funds during National Ovarian Cancer Awareness month, Kelly Ripa is wearing this limited edition t-shirt that she helped design for Electrolux, Europe's leading premium appliance brand. Kelly's hope is that women everywhere join her as she

"wears her heart on her sleeve" to help raise awareness for this important cause. All of the proceeds will go to the Ovarian Cancer Research Fund. \$30, [electroluxappliances.com](#).



HOT SCARF

The Evil Eye Scarf by Otrera is a chic scarf made of 100 percent silk chiffon. This hand sewn fashion statement has a glass evil eye charm attached onto each corner and is available in black, blue, green, orange and purple. \$198,

[otrera.com](#)



HOT HANDBAG

Spruce up your wardrobe with the chic design and bold patterns on the West/Feren [handbags](#). Inspired by the designer's adventurous grandmothers who loved to travel, these handbags feature high-end craftsmanship with military details and colorful

African fabrics. Ranging from \$173 to \$708, [westferen.com](#)



HOT TEE

Now *Survivor* fans can outwit, outplay and outlast any challenge while supporting a good cause. EDUN LIVE, the socially-conscious clothing brand created by Bono, is debuting a newly-designed *Survivor* t-shirt in time for the premiere of the show's 17th

season set in Gabon. The tees will support EDUN LIVE's mission of driving sustainable employment in sub-Saharan Africa. \$25, [CBSStore.com](#)

Star
Subscribe Now
SAVE
70%
off the cover price!

